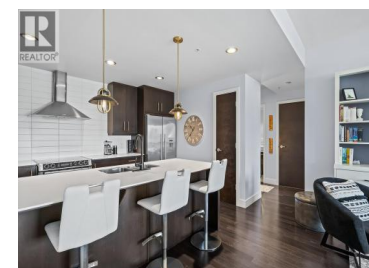




2040 Springfield Road 1208 Kelowna British Columbia

Springfield/Spall

\$580,000



Experience contemporary urban living at INvue with this stylish sub-penthouse condo. Updated with fresh paint, new carpets, blinds, modern faucets, extra shelves and cabinetry in the living room, and a new electric fireplace, enhancing both style and functionality. This unit also comes with two underground parking stalls—a rare and highly desirable feature. Located in a well-maintained concrete tower, this 2-bedroom, 2-bathroom unit offers 1,011 sq. ft. of split-layout space—perfect for young families, first-time buyers, or empty nesters. Bright & airy with floor-to-ceiling windows, it features dual balconies with mountain, city, and Okanagan Lake views in the distance ideal for relaxing or entertaining. Quick occupancy is possible, and there is an optional high-end furniture package available. The open-concept living area now includes additional storage and a cozy electric fireplace. The primary bedroom has dual closets and a luxurious five-piece ensuite with double vanities. Building amenities include a 15th-floor rooftop pool, hot tub, fitness center, dog wash, and a residents lounge with pool table and games. In-suite laundry and pet-friendly policies add convenience. Its prime location offers easy access to groceries, retail stores, restaurants, Orchard Plaza, and Orchard Park Shopping Centre. This condo combines modern updates, excellent amenities, rare parking, and ...



RE/MAX Kelowna
100-1553 Harvey Avenue
Kelowna, BC,
Canada

Richard Taylor

Engel & Volkers Okanagan

Phone: (250) 864-9476

