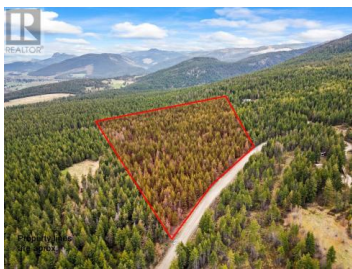




## 121 Bluenose Road Vernon British Columbia

Lavington

**\$499,900**



LOCATION! Unlock the possibilities on this remarkable 19.79-acre parcel, conveniently located just 20 minutes from Vernon. This acreage features mature trees and a selection of level building sites. Design your dream home where you can create gardens, find valley views, or establish pastures - the space is yours to define. Essential services are in place with power at the road and a high-yield (30 GPM) Artesian well. Situated on a well-maintained road, a short 1 km from pavement and overlooking the Coldstream Valley, this property balances rural serenity with easy access to amenities. Whether you desire a private retreat or a self-sustaining homestead, this wilderness land offers a blank canvas for your aspirations. (Please be aware of local wildlife and take necessary precautions, such as carrying bear spray and making noise when on the property.) (id:6769)

### Sheri Rice

Royal LePage Downtown Realty

Phone: (250) 309-4910

<https://sheririce.royalpage.ca/>



RE/MAX Kelowna  
100-1553 Harvey Avenue  
Kelowna, BC,  
Canada