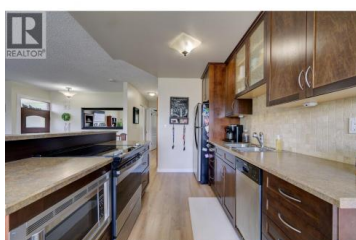




## 1210 Monashee Court Kamloops British Columbia

Sahali

**\$564,900**



This well-maintained half duplex offers comfort, convenience, and a prime location in one of Kamloops' most sought-after neighbourhoods on a quiet thru road. Recent updates include new paint, flooring and trim, windows, roof (2010) a refreshed main bathroom with new tub and toilet, and stainless steel appliances. The main floor features 2 bedrooms and a full 4 piece bathroom, while the finished basement offers a 3rd bedroom, 3 piece bathroom, and a spacious rec room; perfect for guests or additional living space. Basement does have separate entry and could be suited. Enjoy the bonus of a single car garage with lots of extra parking available. Located within walking distance to the hospital, downtown, Peterson Creek Park, and Sahali Secondary, this property combines low maintenance living with unbeatable accessibility. (id:6769)

### Indy Bal

RE/MAX Real Estate (Kamloops)

Phone: (778) 220-4639

<http://www.indybal.com/>



RE/MAX Kelowna  
100-1553 Harvey Avenue  
Kelowna, BC,  
Canada