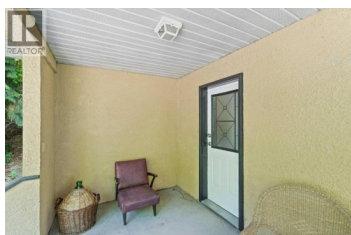
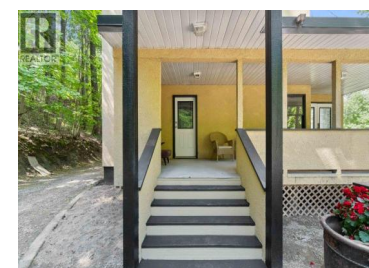




1210 Trans Canada Highway Highway Salmon Arm British Columbia

NE Salmon Arm

\$879,000



Welcome to Timeless Tranquility on 2.21 Acres Tucked away beneath a canopy of mature trees, this serene 2.21 acre estate offers a rare blend of privacy, charm, and classic country living. The main residence, a four-bedroom, three-bath home with new roof, echoes the warmth of generations past while offering all the comforts of modern living. Recent updates include electrical, furnace and some appliances. Spacious yet cozy, it invites you to slow down, breathe deep, and savor the simple moments. Just a short stroll from the main house, the one-bedroom, one bath carriage house, also sporting a new roof, provides the perfect retreat for guests, extended family, or income opportunities. Whether you're sipping morning coffee on the porch, listening to the rustle of leaves in the breeze, or watching the sun set beyond the trees, this property promises a life of peace with all the convenience of being right in town. If you're looking for a place where memories are made, stories are shared around the fire, and life moves just a bit more slowly, this is it. Book your private viewing today. (id:6769)

Virginia Dawson

RE/MAX Shuswap Realty

Phone: (250) 253-7520



RE/MAX Kelowna
100-1553 Harvey Avenue
Kelowna, BC,
Canada

