

1211 SALISH Road Kamloops British Columbia

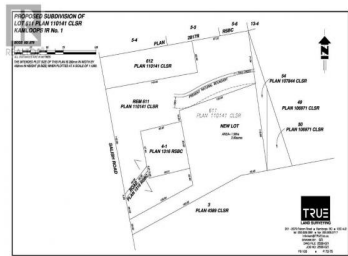
South Kamloops

\$2,500,000

Google Earth

Camille's Horseanship

Imagery Date: 6/25/2022 50°42'26.09" N 120°20'08.28" W elev: 366 m eye alt: 1.00 km



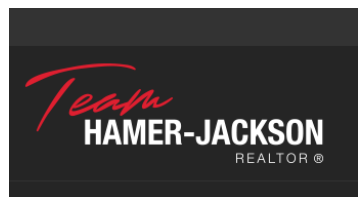
Water, gas & hydro at the lot line. This centrally located flat property permits commercial and light industrial uses, including shop bays, sales, storage, warehouses, related parking office and will accommodate larger trucks of any size. This is a 99 year prepaid lease. Annual taxes will apply. Call listing agent for more information. Seller will also consider a monthly rental of the land. (id:6769)

Torrey Hough

RE/MAX Real Estate (Kamloops)

Phone: (250) 320-4833

<https://www.kamloopshomesforsale.com/>



RE/MAX Kelowna
100-1553 Harvey Avenue
Kelowna, BC,
Canada