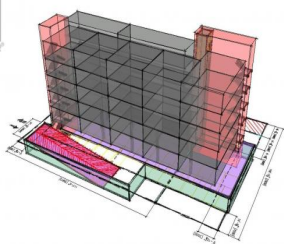




1220 Highway 33 W Other Kelowna British Columbia

Rutland North

\$1,689,000



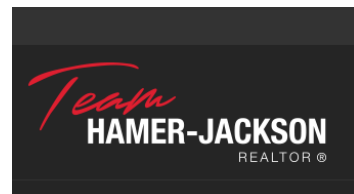
Opportunity for Investors and Builders!! 0.289 Acre (12,559 SF) lot with 5 beds and 2 baths character home, a huge backyard with a workshop. Future Land uses C-NDH, on a transit-supported corridor. As per the new Kelowna Official Community Plan, transit-supported corridors can support added density and this can potentially support a multifamily development of 35 residential units in total with a gross floor area of - 30,000SF. The home is currently rented for \$3500 plus utilities. (id:6769)



Gary Judge

RealtyMonX

Phone: (250) 899-3101



RE/MAX Kelowna
100-1553 Harvey Avenue
Kelowna, BC,
Canada