



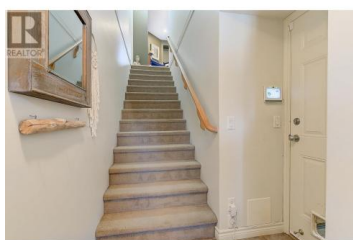
456 McPhee Street 125 Kelowna British Columbia

Rutland North

\$620,000



Great townhome at Parkside Villas with views of Ben Lee park. Upscale 3 level townhome featuring a functional open concept with hardwood floors on main level, great kitchen with stainless steel appliances and gas range. Natural gas fireplace makes for a cozy dining room space with direct patio access with BBQ gas hook up. On the second level, you'll find a lovely primary ensuite with a 3 piece (shower) ensuite and walk-in closet. 2 more generous sized bedrooms and a full bathroom(bath). The garage is a tandem 2 car garage but you can currently find an awesome recreational room perfect for additional living space. New roof was completed (2024). Cats/Dogs okay, limit to two. Rentals allowed, no short term rentals. A great family neighborhood close to schools, transit, UBCO & shopping. Ben Lee park is at your doorstep with walkways, open grass and waterpark. (id:6769)

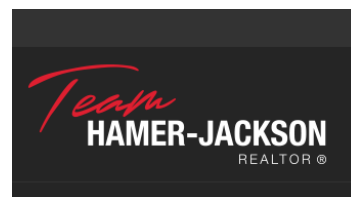


Annick Rocca

Royal LePage Kelowna

Phone: (250) 808-7537

<http://annickrocca.ca/>



RE/MAX Kelowna
 100-1553 Harvey Avenue
 Kelowna, BC,
 Canada