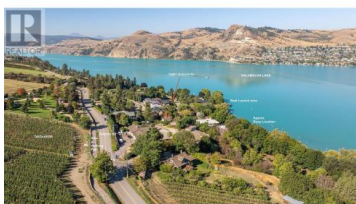
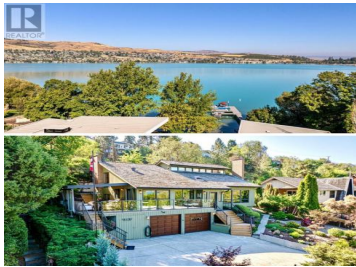




12601 Kinloch Drive Coldstream British Columbia

Mun of Coldstream

\$1,285,000



LOCATION, LOCATION, LOCATION! Desirable and Exclusive Kinloch Estates area. Immaculately kept and updated, this 1981 Westcoast Contemporary style home has lofty cedar ceilings and sits on a gorgeous 0.266-acre lot on a quiet dead-end street across the street from azure blue, Kalamalka Lake. In a neighbourhood of multimillion-dollar homes, steps to water access at the Kinloch Boat Launch, enjoy all the benefits of lakeshore living, with a private buoy to moor your boat. Behind you is a beautiful orchard and a safe walking and biking path to the local elementary school (Kidston School) - head the other way and arrive at Kalamalka Lake Provincial Park. This location is a paradise !!! This home has it all nestled on a quiet dead-end street. 5 bedrooms (One currently used as a second family room), lots of parking, access from the back lane and front, workshop in the garage, terraced backyard, small plunge pool and new deck on the upper terrace with a magnificent lake view. 35-minute drive to the Kelowna airport, bike or short drive to Vernon Jubilee Hospital, 1/2 hour from world-class skiing at Silver Star and Golfing at Predator and Vernon Golf & Country Club. This is the one you have been waiting for, listings rarely come up in this subdivision. (id:6769)

Maria Besso

RE/MAX Vernon

Phone: (250) 308-1152

<http://www.besso.ca/>



RE/MAX Kelowna
100-1553 Harvey Avenue
Kelowna, BC,
Canada

