

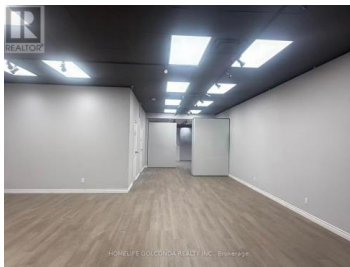


100 West Beaver Creek Road 13 Richmond Hill Beaver Creek Business Park Ontario

Beaver Creek Business Park

\$20

HOMELIFE GOLCONDA REALTY INC., Brokerage



Sublease opportunity at 100 West Beaver Creek. Outstanding open-concept showroom with private offices and bright solarium front. High-end interior renovations including freshly painted 18-ft clear ceiling, LED lighting, removable display stands, kitchen, and 2 washrooms. Includes 430 sq. ft. mezzanine for extra storage. Excellent location in high demand Beaver Creek Business Park. Close to Hwy 7 with easy access to Hwy 404 & 407. High-performance industrial zoning. Turn-key condition. (id:6769)



RE/MAX Kelowna
100-1553 Harvey Avenue
Kelowna, BC,
Canada

JESSIE ZHU

HOMELIFE GOLCONDA REALTY INC.

Phone: (905) 888-8819

