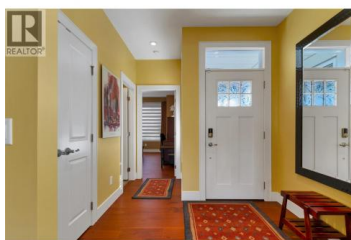


1960 K.L.O. Road 13 Kelowna British Columbia

Springfield/Spall

\$984,900



Welcome to the sought-after Gablecraft complex, just steps from Mission Creek Golf Course! This beautifully maintained 2 bed rancher offers open-concept living with high ceilings and a bright, spacious feel throughout. Nearly \$78,000 in upgrades adds exceptional value, including hardwood flooring throughout, fresh paint, a stunning new fireplace with feature wall, updated light fixtures, and a larger built-in microwave. The spacious kitchen features expanded pantry and shelving for extra functionality, granite countertops and a huge island. The primary bedroom includes a spa-like ensuite and walk-in closet. Remote roll shutters and a home security system provide added comfort and peace of mind. Outdoor living shines with large, private, covered and open air patio areas, with exposed aggregate sidewalks and sitting areas, enhanced by an awning, fan, soffit outlets, bug screen, irrigation, and a hot tub -- perfect for relaxing or entertaining. Complete with a 2 car garage featuring built-in shelving and Bluetooth opener, plus 2 additional parking spots on the driveway. A garden shed and gardening cabinet provide extra storage. An exceptional opportunity in a premier community! (id:6769)

Dan Reinhardt

Royal LePage Downtown Realty

Phone: (250) 309-9111

<http://www.danreinhardt.ca/>



RE/MAX Kelowna
100-1553 Harvey Avenue
Kelowna, BC,
Canada

