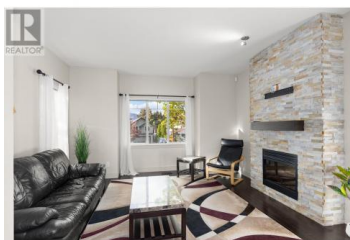


600 Sherwood Road 13 Kelowna British Columbia

Lower Mission

\$774,900



Large end-unit townhome in Lower Mission. This sought-after location is ideal for those who want a townhome in a prime location with excellent access to amenities, parks, and schools. Elementary and secondary schools are a block away, and the new DeHart Community Park is adjacent to the complex. It will feature a wide variety of amenities, including soccer fields, basketball courts, pickleball and tennis courts, walking trails, a bike park and a dog park. The corner location, offering more natural light and increased privacy, is also away from the busy tennis courts. As an extra bonus, it's a short walk to Sarson's Beach! This home features 4 bedrooms, 4 bathrooms, and multiple living areas giving it space and flexibility. The layout is perfect to work from home with a large flex room (great bedroom or office) on the lower level along with a half bath. The open concept living area has a spacious living room with a gas fireplace, which leads to the dining room and kitchen. The kitchen has granite countertops and stainless appliances, and opens onto the deck, perfect for relaxing and barbecuing. The main level is finished off with a powder room plus secondary living space adjacent to the kitchen, which could easily be a second office space or computer area. Upstairs is a generous primary bedroom with full ensuite, two more bedrooms, full bath, and laundry. There is a double g...



RE/MAX Kelowna
100-1553 Harvey Avenue
Kelowna, BC,
Canada

Geoff Hall

Angell Hasman & Assoc Realty Ltd.

Phone: (250) 575-4292

<https://hallcassie.com/>

