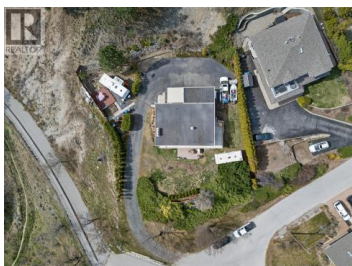


13006 Bristow Road Summerland British Columbia

Lower Town

\$850,000

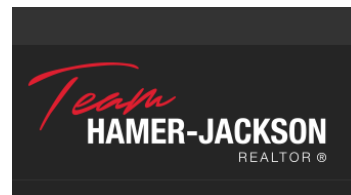


Rare opportunity meets serious potential on this expansive 0.73-acre property in Lower Town Summerland. With RU2 zoning and over 31,000sq. ft. of land, this is a standout chance for multi-generational families or investors looking to develop, subdivide, or secure a long-term asset in a prime location. Just steps from the lake, the setting is as appealing as the upside. The existing 4-bedroom, 2-bathroom home offers 2,495square feet and includes a walk-out basement with suite potential, ideal for extended family or added income. Lake and mountain views add to the lifestyle appeal, while the lot itself provides space rarely found this close to town. Surrounded by recreation, you're moments to the Rotary Trail, Peach Orchard Beach, and local gathering spots, making this a property that blends lifestyle with long-term value. Opportunities like this don't come along often—especially with this much room to grow (in more ways than one). (id:6769)

Natalie Wood

Real Broker B.C. Ltd

Phone: (604) 202-4209



RE/MAX Kelowna
100-1553 Harvey Avenue
Kelowna, BC,
Canada