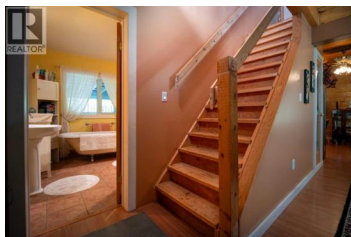
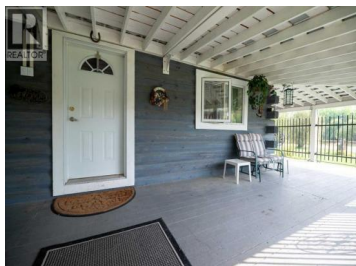




1301 Wolf Trail Sandy Lake Alberta

\$230,000



Discover the charm and tranquility of Sandy Lake in the MD of Opportunity No. 17. This quaint northern Alberta hamlet is surrounded by forest, lakes, and endless outdoor activities. About 5 hours north of Edmonton, this close-knit community offers year-round fun with a skate park, youth centre, outdoor skating rink, community hall, and fire station. You'll also find easy access to boating, fishing, hunting, and peaceful backcountry trails. Fully serviced with water, sewer, power, and natural gas, Sandy Lake blends rustic living with modern convenience. Built in 2005, this welcoming two-storey home is filled with warmth and potential. The main floor features a cozy one-bedroom layout with an open-concept kitchen and living area highlighted by rich wood accents, laminate flooring, and granite-tiled countertops. A bright and cheerful full bathroom with a clawfoot tub adds vintage charm. The upstairs is a. bout three-quarters finished and ready for your personal touch. There's space for two more bedrooms, a bonus or family room, and a roughed-in second bathroom, perfect for creating the layout you need. Set on a nicely landscaped 1.7-acre lot and sold with a full vacant lot next door, you'll have plenty of space to expand, garden, build a shop, or simply enjoy the extra privacy. A wrap-around covered deck runs the length of the home, offering a shady spot to relax, entertain, an...



RE/MAX Kelowna
100-1553 Harvey Avenue
Kelowna, BC,
Canada

SHAHIRA BURY

ROYAL LEPAGE COUNTY REALTY

Phone: (780) 675-0800

