



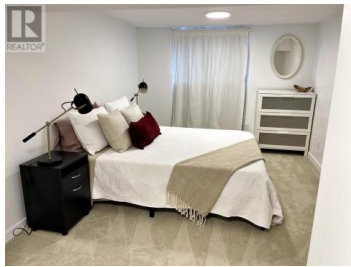
**13017 Rosedale Avenue Summerland British Columbia**

Main Town

**\$825,000**



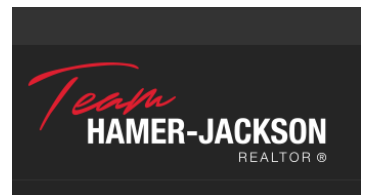
Updated in excellent condition, this is a move right in opportunity for BUSINESS OWNER that can generate immediate cash flow from the legal rental suite! Character stand-alone retail or office or professional services can make excellent uses of the highly visible, easy parking main street location. So many updates and so many MORE updates in the last 2 years. Nothing left to do here. Many uses in CB1 zoning such as partial residential/commercial, educational services, business support services, hotel, office, personal services, veterinary clinic, childcare, to name a few. Recent positive Phase I Environmental Report is available. The main floor of the 2,380 sf building includes bright welcoming retail or can be professional offices with consulting offices. Total of 6 off-street parking spaces, and a nicely finished outdoor amenity. Easy to show with short notice, just contact listing agent. (id:6769)



**Patrick Murphy**

Rennie & Associates Realty Ltd.

Phone: (250) 486-2529



**RE/MAX Kelowna**  
100-1553 Harvey Avenue  
Kelowna, BC,  
Canada