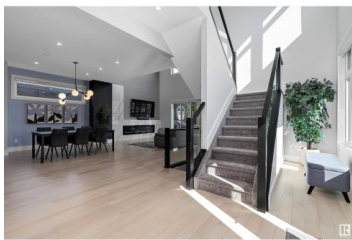
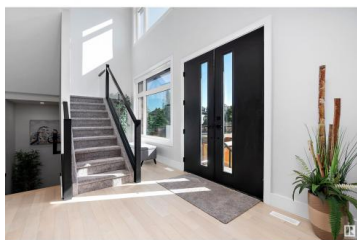




Edmonton Alberta

Cameron Heights (Edmonton)

\$1,148,000



Stunning 3231 sq. ft. PLATINUM SIGNATURE HOME with amazing ATTENTION TO DETAIL, located on a spacious corner lot just STEPS TO TRAILS with a perfect sized yard! Enter this open concept CONTEMPORARY 2 STORY great room surrounded by NATURAL LIGHT with a LINEAR FIREPLACE, RICH BLOND HARDWOOD & access to the fabulous DECK with gas & yard with LV LIGHTING! The GLASS ROOM offers unlimited DESIGN CHOICES! 10' CEILINGS throughout the main & a spacious dining room with TRANSOM WINDOWS leads to the ISLAND KITCHEN surrounded by an abundance of MODERN CABINETS, QUARTZ WATERFALL, LUXURY BI APPLIANCES, GAS COOKTOP & BOSCH COFFEE CENTER! A generous WALK IN PANTRY & a perfectly organized MUDROOM are just off of the HEATED GARAGE that features an EV CHARGER & EPOXY FLOORS! The CENTRAL STAIRCASE leads up to a bright BONUS ROOM, 4 generous bedrooms, the 5 pc. MAIN BATH plus the LAUNDRY ROOM. The SUNLIT PRIMARY offers an IMPRESSIVE WI CLOSET & SPA ENSUITE with SHOWER & TUB. AC, POWER BLINDS, WATER FEATURE & BI SONOS, WOW! (id:6769)

Mona C. LaHaie

RE/MAX Elite

Phone: (780) 850-0800

<http://www.horsepowerranch.com/>



RE/MAX Kelowna
100-1553 Harvey Avenue
Kelowna, BC,
Canada

