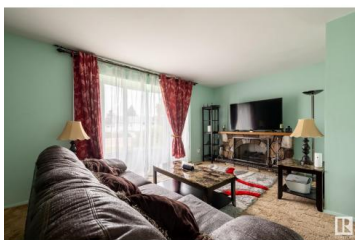




Edmonton Alberta

Belvedere

\$380,000



This home offers incredible versatility with a 4-bedroom, 2.5-bath layout upstairs, plus a finished basement featuring 2 additional bedrooms, a full bath & a second kitchen. Situated on a large lot backing onto a park, this property offers both privacy & green space right out your back door. The main floor is bright and welcoming, with a spacious living room, functional kitchen with a dining area. The primary suite features a 2pc ensuite, while the other three bedrooms are generously sized & share a full main bath. Downstairs, the finished basement includes a shared laundry & a separate living area with 2 bedrooms, a full bathroom & a second kitchen. Additional highlights include a oversized single detached garage, mature landscaping, and plenty of parking. The backyard is perfect for families, gardeners, or outdoor entertaining—with direct access to the park behind! Located close to schools, public transit, shopping, and major routes, this home offers excellent value and flexibility. (id:6769)

Jim Dhillon

RE/MAX Elite

Phone: (780) 952-2995

<http://www.jimdhillon.ca/>



RE/MAX Kelowna
100-1553 Harvey Avenue
Kelowna, BC,
Canada