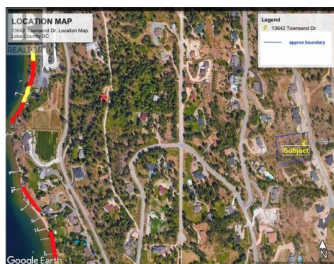


13642 Townsend Drive Lake Country British Columbia

Lake Country North West

\$650,000



Ravensridge Subdivision in Lake Country, with a beautiful Okanagan Lake view. The perfect building lot for your dream Rancher with a walkout basement-style home. Rare 1.06 acre Lake view ACREAGE LOT. Paved, curbing, lighting and road maintained by the municipality. All underground services at the property line, plus a new water system. Only minutes to downtown Winfield - 10 minutes to Kelowna International Airport. Lake Country is one of BC's fastest-growing and most desirable municipalities in the Okanagan. With vineyards at your doorstep and beautiful views, surrounded by multimillion-dollar homes this is a rare gem. This vacant Estate building lot in Forest Hills Estates offers a spectacular view of Okanagan Lake. The lot is on the downhill side of the street, perfect for your dream-level entry rancher with a walkout basement, with lots of room for a swimming pool. This is just what you have been looking for minutes from Okanagan Lake, a stone's throw from all the best Okanagan wineries, and 10 minutes to Vernon's world-famous Predator Ridge Golf Course and Sparkling Hills Resort. (id:6769)

Maria Besso

RE/MAX Vernon

Phone: (250) 308-1152

<http://www.besso.ca/>



RE/MAX Kelowna
100-1553 Harvey Avenue
Kelowna, BC,
Canada