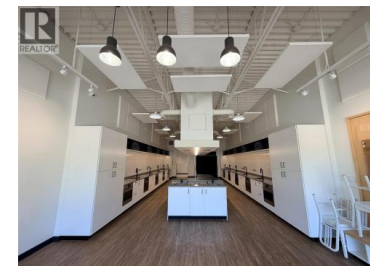
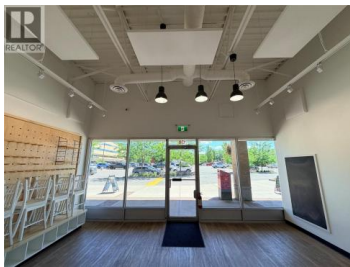




1876 Cooper Road 138 Kelowna British Columbia

Springfield/Spall

\$34



Welcome to Unit #138 - 1876 Cooper Road, ideally situated within Orchard Plaza Shopping Centre, one of Kelowna's busiest retail destinations in the heart of the Springfield/Spall corridor. This 1,300 SF retail unit offers exceptional exposure, convenient access, and steady pedestrian and vehicular traffic throughout the day. Positioned directly across from Orchard Park Shopping Centre, the property is surrounded by a strong mix of national and regional retailers including Winners, Save-On-Foods, Cineplex, MEC, Nature's Fare, and JYSK, along with a variety of service-oriented and boutique businesses. The unit features an open-concept layout with excellent storefront frontage and is strategically located between Chopped Leaf and Rocky Mountain Fitness, creating strong neighbouring traffic synergy. This is a rare opportunity to secure space within one of Kelowna's most established and high-performing retail corridors, offering outstanding visibility and built-in customer traffic for both daily shoppers and destination visitors. (id:6769)

Christopher Wills

Venture Realty Corp.

Phone: (250) 870-1330

<https://venturecommercial.ca/>



RE/MAX Kelowna
100-1553 Harvey Avenue
Kelowna, BC,
Canada