

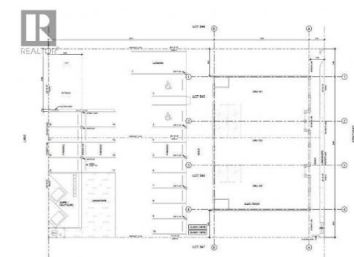


WHISTLEBEND SUBDIVISION, WHITEHORSE, YUKON



Whitehorse Yukon

\$2,200,000



Brand new 4564 sq ft commercial building in up and coming Whistle Bend neighbourhood. Building will soon be ready for fit up including polished concrete floors, metal roof, triple glazed windows, metal exterior with stone accents, can be separated into three units. Call for details (id:6769)



Marc Perreault

RE/MAX ACTION REALTY

Phone: (867) 334-4212



RE/MAX Kelowna
100-1553 Harvey Avenue
Kelowna, BC,
Canada

