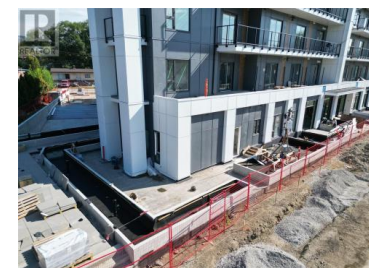
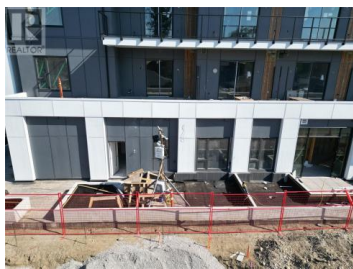
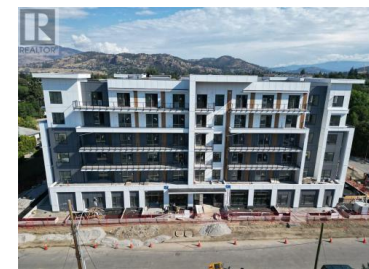




1380 Pridham Avenue Kelowna British Columbia

Springfield/Spall

\$775,000



COMING LATE SUMMER 2025 - THE ANACAPRI | 3 BED + 2 BATH TOWNHOME | GROUND-FLOOR CORNER UNIT. Welcome to The Anacpri, a modern and vibrant new community located just minutes from shopping, restaurants, parks, and transit. This ground-floor corner townhouse (Plan E1) features 3 bedrooms and 2 full bathrooms, showcasing a stylish open-concept design with clean lines and a warm, natural colour palette. Enjoy a total of 1,489 sq ft of combined indoor and outdoor living space, including a spacious 585 sq ft private outdoor area, ideal for relaxing or entertaining. Highlights: Smart home technology + common-area security monitoring, 2 Parking Stalls + 1 Storage Locker, Ground-floor convenience and privacy, Community Amenities: Fitness Facility, Multi-Use Social Lounge, and Smart Parcel Delivery System. Whether you're a first-time buyer, downsizer, or investor, The Anacpri offers a connected, convenient lifestyle with a summer 2025 completion. This is an assignment sale. Price + GST. Don't miss your opportunity to own in one of the area's most exciting new developments. Contact your Realtor today! (id:6769)

Scott Jennings

RE/MAX Kelowna

Phone: (250) 864-4414



RE/MAX Kelowna
100-1553 Harvey Avenue
Kelowna, BC,
Canada

