



45B West Wilmot Street 14 Richmond Hill Beaver Creek Business Park Ontario

Beaver Creek Business Park

\$19

HOMELIFE LANDMARK REALTY INC. Brokerage



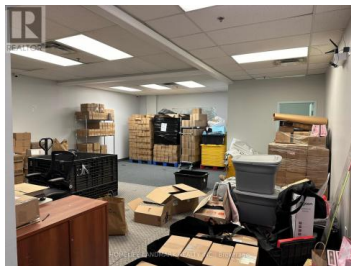
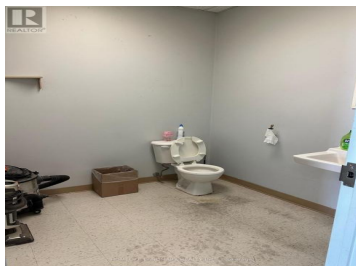
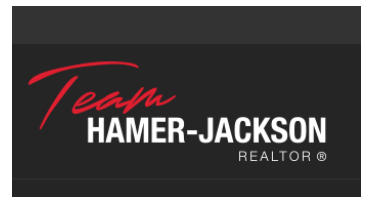
Very functional warehouse in the center of Richmond Hill, minutes to Hwy 404, shipping can accommodate 53' trailers, small office with a good size of show room. (id:6769)

PETER DING

HOMELIFE LANDMARK REALTY INC.

Phone: (905) 305-1600

<http://www.verycondolife.com/>



RE/MAX Kelowna
100-1553 Harvey Avenue
Kelowna, BC,
Canada