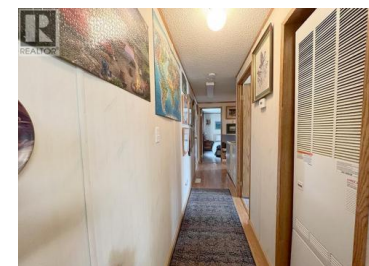




14 PLUTO Drive Kamloops British Columbia

North Kamloops

\$158,000



Seniors Alert! This 2-bedroom, 1-bathroom unit with an 8'x37' covered addition (can be used as a den and office) in Riverdale 55+ Senior park is ready for its new owners! Located in central Kamloops and close to several amenities, this unit is situated in a quieter part of the park, has central air-conditioning and offers an open living, kitchen and dining area. Enjoy the covered deck and the nicely shaded outdoor area on hot summer days. The 10'x13' shed is included in the sale and a bonus for extra storage space. Pad rental covers water, sewer and road maintenance. Garbage collection is separate. No rentals or pets allowed. Conventional financing not available as Park does not sign Bank Assignment Site Lease. Quick possession is possible and all furniture/ furnishings are negotiable and can be included in sale. (id:6769)

Sherry Kosovic

eXp Realty (Kamloops)

Phone: (250) 819-2136

https://www.youtube.com/channel/UCn09momCEZE1_dSFenV74Lw

UCn09momCEZE1_dSFenV74Lw



RE/MAX Kelowna
100-1553 Harvey Avenue
Kelowna, BC,
Canada