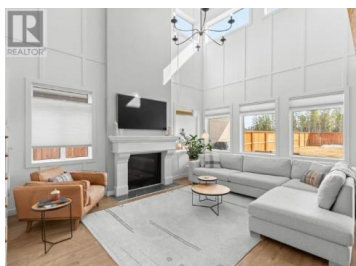
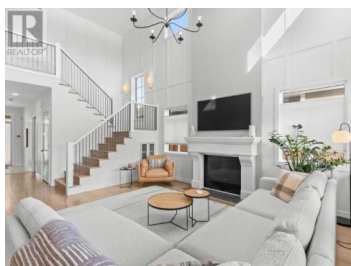




Whitehorse Yukon

\$1,188,000



This remarkable custom-built home in Whistle Bend offers over 3,400 sq ft of thoughtfully designed space that blends exquisite style, quality, and timeless taste. Set on a fully fenced and landscaped 8,700+ sq ft lot backing onto peaceful greenspace, it delivers privacy and beauty. Highlights include a chef's kitchen with Cafe appliances, a butler's pantry, and solid surface counters throughout. Cozy up by the propane fireplace or entertain with ease in the open-concept living areas. The main floor features a private guest wing for added flexibility, while the stunning primary suite boasts a walk-in closet, dual vanities, and a south-facing deck with breathtaking mountain views. Built with care and craftsmanship, this is one of Whitehorse's most exceptional homes. Don't miss your chance—this one is truly special (id:6769)

Julie Clark

COLDWELL BANKER REDWOOD REALTY

Phone: (867) 687-4663



RE/MAX Kelowna
100-1553 Harvey Avenue
Kelowna, BC,
Canada