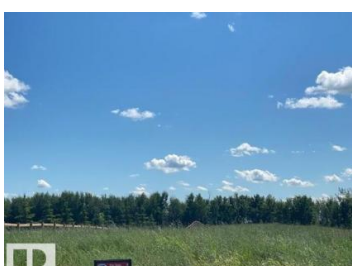
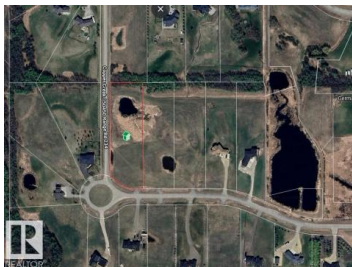




Rural Leduc County Alberta

Copper Creek

\$315,000



Copper Creek is located minutes east of Beaumont and just south of (Township Road 510) Eagle Rock Golf Course on Range Road 234. Architectural Controls and Restrictive Covenants are in place with respect to minimum building sizes, exterior finishing, garage sizes & accessory buildings that ensure high buildings standards and protect your investment. Utilities include underground power and gas thru the ditches, cisterns for city water and a septic system acceptable to Leduc County standards that includes mounds and onsite water treatment. Located in the Black Gold and Star Catholic School District providing busing to schools in Beaumont. Excellent paved location minutes from Edmonton, Beaumont, Nisku & the EIA! Taxes are currently assessed as agriculture. (id:6769)

Mona C. LaHaie

RE/MAX Elite

Phone: (780) 850-0800

<http://www.horsepowerranch.com/>



RE/MAX Kelowna
100-1553 Harvey Avenue
Kelowna, BC,
Canada

