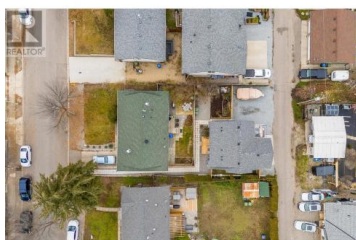


1400-1404 Braemar Street Kelowna British Columbia

Glenmore

\$1,250,000



INVESTMENT ~ GREAT POTENTIAL ~ 3 UNITS ON ONE LOT! This great investment property is in the heart of the City, close to Parkinson Rec Centre, trails to the beach and Knox mountain, schools, amenities, transit and more. It offers an original home at the front that has had some updates, and it's great as a holding property or a buyer could turn it into a dream home, it has so much potential! This main home is two levels, and offers two bedrooms and one bathroom upstairs, and one bed one bath downstairs. It's got a great front yard and fenced backyard, as well as an attached carport and shed. The carriage home is accessible from the laneway, which also offers lots of parking. It was newly built in 2023 and comes complete with a two bedroom legal suite upstairs and a legal studio suite at ground level, along with a double garage. Full floor plans are available. Have a look at the location on Google Earth and you'll see why this neighbourhood is ripe with potential. Book your showing today! (id:6769)

Stephanie Gilchrist

Coldwell Banker Horizon Realty

Phone: (250) 878-5260

<http://www.stephaniegilchrist.com/>



RE/MAX Kelowna
100-1553 Harvey Avenue
Kelowna, BC,
Canada