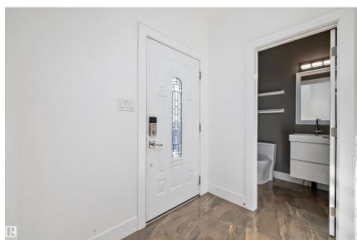




## Edmonton Alberta

Glenora

**\$675,000**



BEAUTIFUL 1627 sq. ft. 2 STOREY with FULLY DEVELOPED BASEMENT & DETACHED GARAGE in GLENORA. This NEWER BUILT (2016) HOME features a front verandah leading to the BRIGHT FOYER with tile flooring, off the foyer is a 2 pc. bath & a BEDROOM/DEN. GREAT ROOM STYLE with laminate flooring, ELECTRIC FIREPLACE with BUILT-INS & SURROUND SOUND. MODERN WHITE KITCHEN with stainless appliances, GAS STOVE, mosaic tile backsplash & QUARTZ COUNTERS & a generous dining room. There is mudroom with BACK DOOR access to the deck & yard. Upper level features a LARGE PRIMARY BEDROOM with WALK-IN closet, spa ensuite with dual sinks, SOAKER TUB & OVERSIZED TILE SHOWER. 2 additional beds, a 4 pc. main bath & a handy laundry completes the upper level. The 665+ sq. ft. finished lower level features a family room/kitchen, 2 beds, a 4 pc. bath, laundry & more. LOW MAINTENANCE LANDSCAPED FENCED YARD with COMPOSITE DECK & GARAGE. FEATURES:CENTRAL AIR, 2 FURNACES & more. Great central location just south of Stony Plain Road. (id:6769)

**Curtis L. Roy**

RE/MAX Elite

Phone: (780) 707-9075

<https://www.horsepowerranch.com/>



RE/MAX Kelowna  
100-1553 Harvey Avenue  
Kelowna, BC,  
Canada