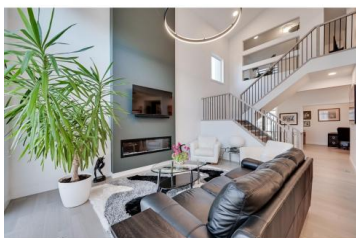




Edmonton Alberta

Hays Ridge Area

\$949,800



Absolutely exquisite home shows a TEN. Nestled on a quiet street just steps to pond & ravine trails. This is a unique layout that you will instantly fall in love with. Shows like new, this modern farmhouse gem spans 2,445 sf w/an open concept living space, perfect for families & those who love to entertain. Stunning interior details- 18 ft vaulted ceiling in the Great rm filled w/natural light w/soaring windows & a 2 sty high FP feature wall. Modern, open kitchen & living area provide a beautiful flow, ideal for gatherings & daily living. Chefs kitchen offers a massive window overlooking the impeccable landscaped yard & massive deck w/a stand up bar. Spacious primary bedrm boasts a luxurious 5-piece ensuite w/His/Hers sinks, a large W/I closet & direct access to the laundry rm. Bonus rm, perfect for family movie nights or as a playrm w/a sleek Triple window wall for privacy while allowing tons of natural light. Easy access to the Anthony Henday, Jagare Ridge Golf, eateries & shopping incl the new Tesoro (id:6769)

Alan H. Gee

RE/MAX Elite

Phone: (780) 498-2187

<http://www.alangee.com/>



RE/MAX Kelowna
100-1553 Harvey Avenue
Kelowna, BC,
Canada