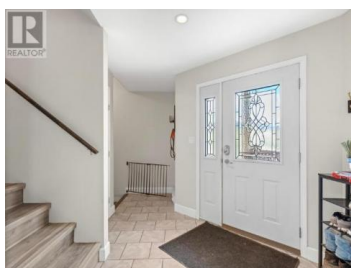


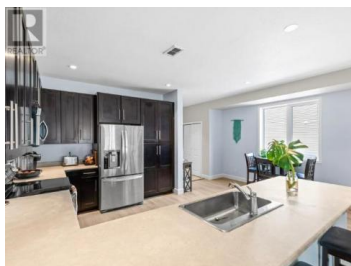
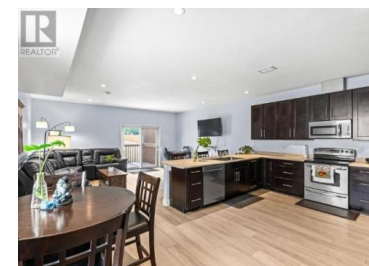
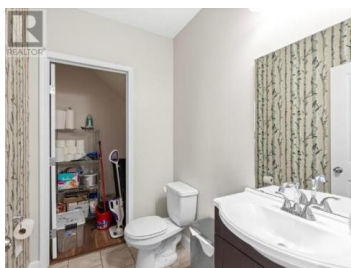


Whitehorse Yukon

\$639,000



Welcome to 1412A Elm Street - a well-maintained half duplex in the sought-after Porter Creek neighbourhood. Offering over 2,800 sq ft of modern living space, this bright and spacious home is ideal for a large family. The main floor features an open-concept kitchen and living area with access to a fully fenced backyard and deck - perfect for entertaining. With 4 bedrooms, 4 bathrooms, a full basement, and a converted garage providing additional living space, there's room for everyone. Enjoy a fully fenced private yard, RV parking, and space for multiple vehicles. Located in a quiet area just minutes from downtown, and walking distance to schools, trails, and amenities. (id:6769)



Jacklyn Stockstill

COLDWELL BANKER REDWOOD REALTY

Phone: (867) 336-8001



RE/MAX Kelowna
100-1553 Harvey Avenue
Kelowna, BC,
Canada