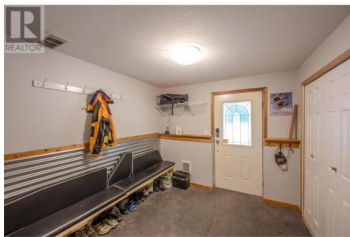
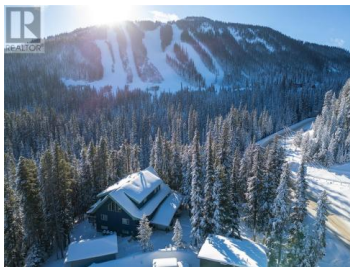


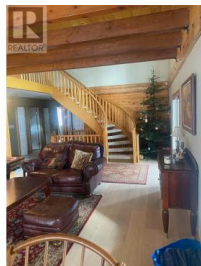
1417 Apex Mountain Road Apex Mountain British Columbia

Penticton Apex

\$999,800



Welcome to Mountain paradise - 1417 Apex Mountain Road. Amazing ski in ski out chalet at Apex Mountain Resort! Surrounded by trees, privately located on walking/skiing trails connecting to main runs. This almost 4000 sq ft retreat was just upgraded with \$350,000.00 renovations. Top 2 floors feature large dining room, living room, games room, 4 bedrooms and 3 bathrooms and has room to comfortably sleep 15 people. Stunning views of ski runs from the top floor balcony and huge wraparound deck with hot tub. Basement contains private one bedroom suite with beds for 6. There are 3 covered parking spots and 2 garages for all your toys and additional storage/ski shed. Resort zoning. Short term rentals allowed. 40 minute drive to Penticton. Must be seen to be appreciated! (id:6769)



Nicholas T. Parker

Royal LePage Locations West

Phone: (250) 462-5464

<https://nickknowshomes.com/>



RE/MAX Kelowna
100-1553 Harvey Avenue
Kelowna, BC,
Canada