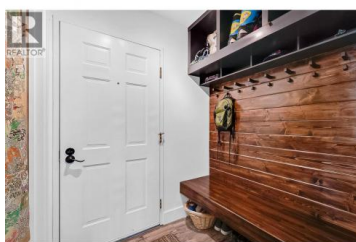


## 715 Leathead Road 142 Kelowna British Columbia

Rutland North

**\$358,000**



Spacious 3 Bedroom Home with Style, Light & a Fantastic Location! This vibrant, beautifully maintained condo offers room to live, create, work, and unwind. With three full bedrooms and an inviting, open feel, this home stands out for its generous spaces, natural light, and unmistakable personality. The updated kitchen flows into a bright dining nook, while the large living room opens to a private balcony overlooking the beautifully kept grounds with mountain and sky views. Each bedroom is surprisingly spacious, making the layout perfect for families, roommates, hobbyists, or anyone needing dedicated office or studio space. The bathroom has been refreshed with modern finishes, and the convenience of in-suite laundry, excellent storage, plus a bonus storage locker adds everyday ease. This well-managed community features lush green spaces and a sparkling inground pool for summer enjoyment. Just steps from Ben Lee Park, and close to schools, shopping, specialty food stores, restaurants, and transit, there are also quick connections to the airport and Big White. The lifestyle here is effortless. Secure underground parking completes the package. A rare opportunity to own a spacious, creative, move-in-ready home in a community that truly has it all. Check this home out, please contact your agent today! (id:6769)



**RE/MAX Kelowna**  
100-1553 Harvey Avenue  
Kelowna, BC,  
Canada

**Sharon Black**

RE/MAX Kelowna

Phone: (250) 878-5533

<http://www.sharonblack.ca/>

