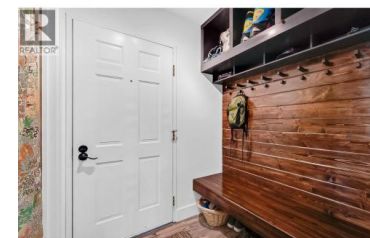


715 Leathead Road 142 Kelowna British Columbia

Rutland North

\$319,000



Spacious, functional, and full of personality, this true 3-bedroom home offers a rare combination of size, flexibility, and lifestyle in a well-connected location. A thoughtfully designed layout provides excellent separation between living and sleeping spaces, while the large, light-filled living room opens to a covered balcony with open sky and mountain views. The updated kitchen features clean white cabinetry, stainless steel appliances, and a dedicated dining nook, creating a practical and inviting everyday space. Each of the three bedrooms is genuinely usable and spacious, offering flexibility for families, shared living, or those needing dedicated office, studio, or creative space. A welcoming entry with custom mudroom-style storage adds everyday function, while the refreshed bathroom, in-suite laundry, and excellent in-home storage, along with a separate storage locker, complete the package. Set within a well-managed community, residents enjoy beautifully maintained green space and a sparkling outdoor pool, with Ben Lee Park just steps away. Schools, shopping, specialty food stores, restaurants, and transit are all close at hand, with convenient access to the airport and Big White. Secure underground parking included. Pet restrictions in place. A rare opportunity to secure a spacious, move-in ready home with room to live, work, and create. (id:6769)

Sharon Black

RE/MAX Kelowna

Phone: (250) 878-5533

<http://www.sharonblack.ca/>



RE/MAX Kelowna
 100-1553 Harvey Avenue
 Kelowna, BC,
 Canada

