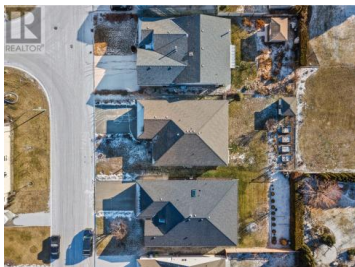




**1439 Nelson Place Kelowna British Columbia**  
 Springfield/Spall  
**\$995,000**



Rancher in a Quiet Cul-de-Sac Near Guisachan Village. This well-kept rancher offers comfortable main-floor living in a mature neighborhood. The open-concept living and dining area is bright and welcoming, with a kitchen that features plenty of counter space, a breakfast nook, and a sunroom. Step outside to a spacious, flat backyard with raised garden beds, a large perennial flower bed, and a tool shed. While the yard is open and unfenced, it fosters a great sense of community with quiet, respectful neighbors who are also avid gardeners. The front yard is beautifully landscaped with rose bushes and other perennials that bloom throughout the seasons. A built-in natural gas line makes outdoor grilling easy--no need for propane tanks! The primary bedroom features a walk-in closet and ensuite, while two additional bedrooms and a full guest bathroom provide space for family or visitors. A large laundry room and double-car garage add extra convenience. Tucked away on a quiet cul-de-sac with almost no traffic--the home offers a peaceful setting in the heart of the city. Newer furnace, hot water tank and a 3 ft crawl space for endless storage. Nearby Munson Pond Park and surrounding farmland enhance the feeling of being further out of town while still being minutes from Guisachan Village, schools, the Mission, and Spall. Homes in this area rarely come up for sale--don't miss this opp...



**RE/MAX Kelowna**  
 100-1553 Harvey Avenue  
 Kelowna, BC,  
 Canada

**Steffie Brenner**

Coldwell Banker Executives Realty

Phone: (250) 549-9400

<http://www.okanaganlands.ca/>

