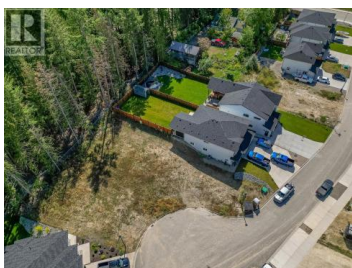
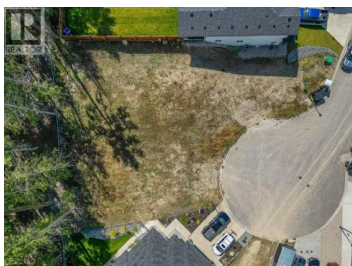




1450 21 Street Salmon Arm British Columbia

NE Salmon Arm

\$279,000



JOY ACRES! Build your dream home in one of Salmon Arms most sought after neighbor hoods! Welcome to one of the most desirable locations in town! This .11-acre R10-zoned lot offers the perfect canvas for your future home--with suite potential for added flexibility or income. Nestled in Joy Acres, this property backs onto lush green space, providing privacy and a peaceful natural setting. Unbeatable walkability: Just steps from elementary, middle, and high schools, plus the local college, making it ideal for families and students alike. You're also minutes from shopping, dining, and recreation, so everything you need is right at your fingertips. Whether you're looking to build for your family or invest in a location that truly has it all, this lot checks every box. Opportunities like this don't come often--secure your spot in Joy Acres today! GST is applicable (id:6769)

Grace Bootsma

Coldwell Banker Executives Realty

Phone: (250) 833-2051

<https://gracebootsma.agent.cbignite.ca/>



RE/MAX Kelowna
100-1553 Harvey Avenue
Kelowna, BC,
Canada