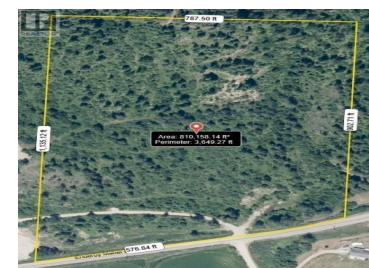




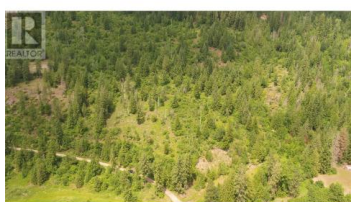
1477 Enderby Mabel Lake Road Enderby British Columbia

Ashton Crk/Mabel Lk

\$299,900



Located 14 km from Enderby, this is a premier opportunity to acquire a remarkable property at an exceptional price--likely the best value for a property of this quality in the region. Priced at \$299,900, this 17.84-acre vacant parcel offers outstanding privacy and panoramic views of the mountains, river, and valley. It provides direct access to Crown Land, making it ideal for outdoor recreation and exploration. The property features utilities readily available at the lot line, creating a solid foundation for your custom-built home or outdoor retreat. Its strategic location offers a wealth of recreational activities, including snowmobiling, ATV riding on extensive trail systems, kayaking on the Shuswap River, and access to nearby Shuswap Lake. Just 15 minutes from renowned destinations such as Hunter's Range, Owl Head, and Mara Mountain, this property combines natural beauty with year-round recreational opportunities. Don't miss the chance to secure a prime piece of land with limitless potential for your future. (id:6769)



Nathan Sulz

eXp Realty (Kelowna)

Phone: (778) 212-0868

<https://nathansulz.com/>



RE/MAX Kelowna
100-1553 Harvey Avenue
Kelowna, BC,
Canada