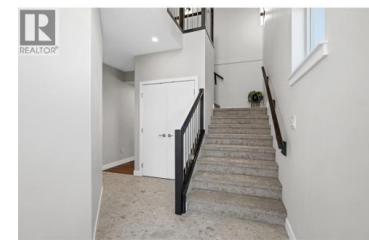
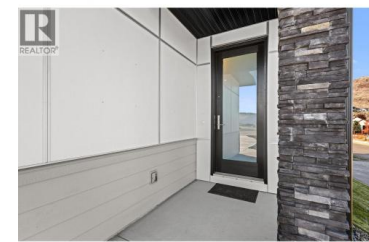




2050 Grasslands Boulevard 148 Kamloops British Columbia

Batchelor Heights

\$769,000



Welcome to Mesa Ridge! An exclusive community of 56 thoughtfully designed duplex-style homes nestled in the scenic hills of Batchelor Heights. This brand-new 2-storey half duplex is completely turn key with 4 bedrooms, 4 bathrooms, window coverings, heat pump and a complete appliance package that includes a fridge, stove, dishwasher, washer, and dryer. The bright, open-concept main floor features expansive windows that fill the space with natural light. The kitchen, dining, and living areas flow together comfortably, creating an inviting setting for both everyday living and easy entertaining. Upstairs, the spacious primary suite offers a private 3 pce ensuite, complemented by two additional bedrooms and another full 4 pce bathroom. Interior finishes include quartz countertops, quality cabinetry by Excel Industries, a walnut slat accent wall, laminate flooring on the main, plush carpet in the bedrooms, and tile in the bathrooms. The fully finished basement adds valuable extra living space with a cozy family room, a fourth bedroom, and a full 4 pce bathroom, ideal for guests, teens, or a home office setup. A double-car garage and low-maintenance yard round out the convenience. Located minutes from schools, parks, hiking trails, and all the amenities Kamloops has to offer, Mesa Ridge offers modern design, hillside calm, and a welcoming sense of community. GST applicable. No PTT...



RE/MAX Kelowna
 100-1553 Harvey Avenue
 Kelowna, BC,
 Canada

Tracy Moffett

Royal LePage Westwin Realty

Phone: (250) 374-1461

