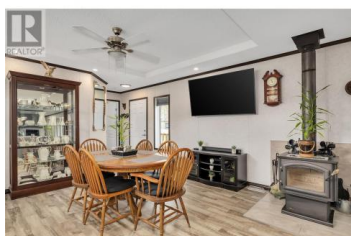


715 Beaver Lake Road 15 Kelowna British Columbia

Lake Country East / Oyama

\$449,900



Welcome to this beautifully crafted like-new 2020 Moduline manufactured home in Winfield MHP, offering 1,584 sq. ft. of stylish living. With 2 spacious bedrooms, 2 full bathrooms, and a versatile 371 sq. ft. bonus room, this home is perfect for relaxing or entertaining. The bonus room features a wet bar with a live-edge wood countertop, dual bar fridges, and a mounted flat-screen TV, ideal as a media room or 3rd bedroom. The primary suite includes a built-in PAX wardrobe with sliding doors and luxurious cheater ensuite boasting a freestanding tub, separate shower, and double vanity. The open kitchen has a central island, GE Profile stainless steel appliances, Thermador convection wall oven and microwave, as well as an induction cooktop. A cozy wood-burning fireplace adds warmth to the kitchen and dining area. French doors lead to a covered deck with a roller awning, and the Synlawn side yard is perfect for pets (dogs OK with restrictions!). 10x10 storage shed for tools and larger items. Additional features include a new full-size stacking washer and dryer and high windows for natural light and privacy. This home backs onto a quiet green space adding additional comfort and peace of mind. Ample parking for several vehicles. Located in a well-managed park with no age restrictions. Easy access to Highway 97, less than 10 minutes to YLW Airport, UBC Okanagan, Wood and Ellison Lak...



RE/MAX Kelowna
100-1553 Harvey Avenue
Kelowna, BC,
Canada

Ben Lim

Royal LePage Kelowna

Phone: (250) 258-6683

