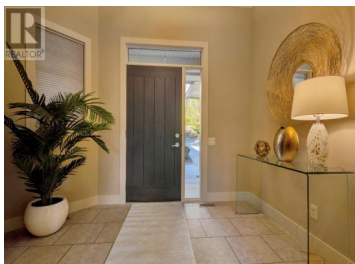


## 971 Monashee Place 15 Kelowna British Columbia

Dilworth Mountain

**\$875,000**



Welcome home to 15-971 Monashee! This executive style home will be sure to check all the boxes. They say location is important - well, how about being situated perfectly between downtown, the mall, and the university, yet still having excellent views and a safe and secure neighbourhood! Park inside your double car garage and keep your vehicles out of the elements, and step inside to a bright open concept home that is flooded with natural light. Vaulted ceilings and huge windows make this space bright and inviting. A great sized kitchen flows into the dining space with access to the patio. Step outside and really take advantage of these excellent views all the way to Kettle Valley! Upstairs you will find your own private retreat with a stunning primary bedroom complete with a huge walk-in closet, a full four piece ensuite, and a sitting area to relax and enjoy a book and a coffee while taking in the views. The lower level is great for growing kids or guests. It has a soundproof media room (or a bedroom as it used to be), a second bedroom, space for an office, and access to the lower patio with space to get your feet on the grass! Don't worry, you'll still have views from the lower level too! Need extra parking? There are 2 more spots on the driveway! This home has it all and this community is immaculately maintained giving you all you need for worry free living! Move in and e...



**RE/MAX Kelowna**  
100-1553 Harvey Avenue  
Kelowna, BC,  
Canada

**Darcy Fiander**

Vantage West Realty Inc.

Phone: (250) 826-9196

