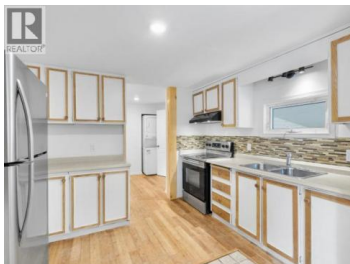
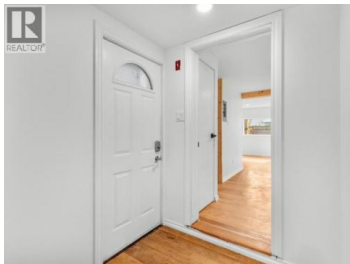




Whitehorse Yukon

\$749,900



Riverdale flexibility and character! 15 Pelly Road offers 2,635 sqft, 3 beds, 3 baths, multiple living areas, and a versatile layout suited for large families, generational living, or a roommate setup. Backing onto greenspace with views toward Grey Mountain, this is a home with personality, function, and options. The main floor blends the kitchen, dining, and living spaces into one connected area, complemented by a wood-burning fireplace and reclaimed bamboo flooring. Three main floor bedrooms are positioned around a full 4pc bathroom, while a bonus flex space with its own 3pc bathroom, yard access, storage, and stairs to the upper level creates excellent separation and flexibility. Upstairs, vaulted ceilings open into a bright family room, 4pc bath, and a wellness space overlooking the covered raised deck. Outside features privacy fencing, planter boxes, multiple decks, bicycle storage, carport parking, and a 14x22 insulated studio/workshop. Numerous upgrades over the years. (id:6769)

Graham Frey

COLDWELL BANKER REDWOOD REALTY

Phone: (867) 689-1286

<http://www.gfreyhomes.com>



RE/MAX Kelowna
100-1553 Harvey Avenue
Kelowna, BC,
Canada