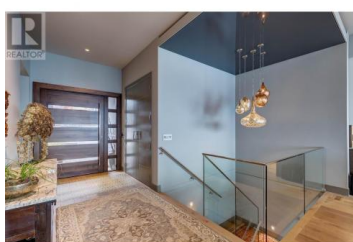
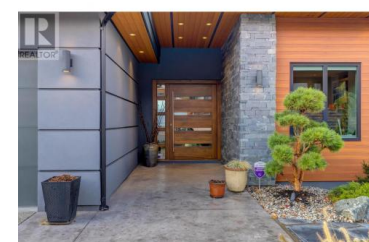




1502 Marble Ledge Drive Lake Country British Columbia

Lake Country South West

\$2,700,000



AWARD WINNING HOME WITH GORGEOUS UNOBSTRUCTED LAKE VIEWS!

This two-time Tommie Award-winning home is perfectly perched in Lakestone's prestigious Waterside phase, showcasing panoramic, unobstructed lake views and fully loaded with quality finishings and upgrades. Offering 4 bedrooms + Office, 4 bathrooms and over 3500 SQ FT of expertly designed living space, this home is the perfect blend of elegance and comfort; and you'll never tire of coming home to the lake and to your views! Enjoy the SW exposure through floor-to-ceiling windows and entertain year-round on the covered deck, complete with ceiling heaters and retractable enclosures to extend your outdoor living season. The Gourmet Carolyn Walsh Kitchen was built to impress, featuring high-end Thermador appliances including a 48" double steam oven, panel door Fridge and Butler's pantry with extra sink and wine & beverage fridge. Wake up to lake views from the primary suite, with a spa-like 5-piece ensuite, soaker tub, tiled shower, and custom walk-in closet with built-ins. The lower level hosts 3 more beds, 2 full baths (one of which includes a sauna), rec & games room and a gorgeous 12x10 wine cellar! PLUS a 20x20 Suspended slab room, giving you the opportunity for over 400 SQ FT of convertible space! Don't miss this rare opportunity to own a true showpiece home in one of the Okanagan's most sought-after communities--sch...



RE/MAX Kelowna
100-1553 Harvey Avenue
Kelowna, BC,
Canada

Chad Bennett

eXp Realty (Kelowna)

Phone: (778) 363-7653

<http://www.ltdrealestate.ca/>

