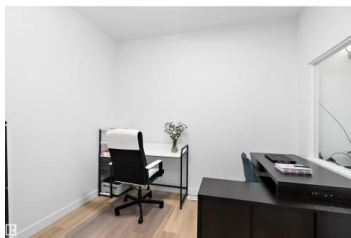
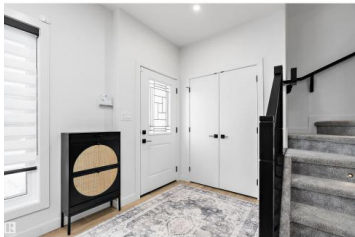




Sherwood Park Alberta

Cambrian

\$575,000



WOW! PICTURE PERFECT, just LIKE NEW & all the work is done, just move in and enjoy this lovely 1618 sq. ft. 2 storey with 9' CEILINGS on all 3 levels, a main floor den, a BEAUTIFULLY DEVELOPED BASEMENT, large deck with privacy wall, LOW MAINTENANCE LANDSCAPE & CENTRAL AIR! CAMBRIAN, Strathcona County's newest neighborhood is just minutes from all the amenities Sherwood Park has to offer! Built by ART HOMES with ATTENTION TO DETAIL, featuring a LINEAR FIREPLACE on the FEATURE WALL, glass wall into the office & gorgeous CONTEMPORARY ISLAND KITCHEN with cabinets to the ceiling, UPGRADED STAINLESS APPLIANCES, RICH QUARTZ COUNTERS, plus a generous dining area, all this with a WIDE MODERN LUXURY VINYL PLANK FLOORING! Up the stairs to a loft space, laundry, 2 lovely bedrooms, a 4pc. bath & GRACIOUS PRIMARY with walk in closet & CUSTOM SHOWER in the ensuite! Perfect basement built by the builder features family room, 4 pc., & guest room! Great deck with PRIVACY WALL, storage, TURF & DOUBLE GARAGE! It's perfect! (id:6769)

Mona C. LaHaie

RE/MAX Elite

Phone: (780) 850-0800

<http://www.horsepowerranch.com/>



RE/MAX Kelowna
100-1553 Harvey Avenue
Kelowna, BC,
Canada

