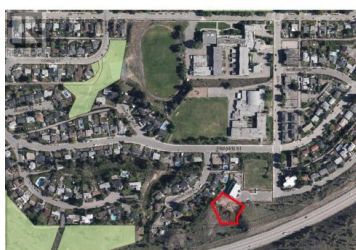




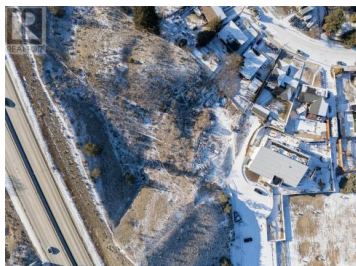
## 1510 9th Avenue Kamloops British Columbia

South Kamloops

**\$2,500,000**



Rare 30,000+ sqft of developable property in Downtown Kamloops in close proximity to Kamloops School of the Arts, Sagebrush Theatre and South Kamloops Secondary School. Located next to the new Children's Circle Daycare. RM3 zoning allows for multi unit residential that allows up to 45,000sqft of buildable (with density bonus) up to a maximum of 4 storeys. This could also be a great location for a daycare or townhouse style development. (id:6769)



### Brendan Shaw

Brendan Shaw Real Estate Ltd.

Phone: (250) 319-4737

<http://www.bsre.ca/>



RE/MAX Kelowna  
100-1553 Harvey Avenue  
Kelowna, BC,  
Canada