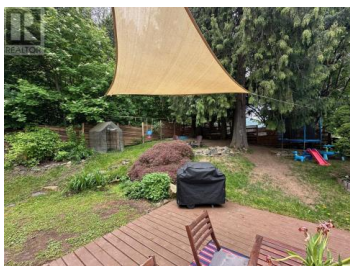




1520 Robertson Avenue Nelson British Columbia

Nelson

\$529,000



One of the stand out features of this home is that it is situated on a corner lot which offers the largest useable yard space in this subdivision. This 3 bedroom home features new cabinets in the kitchen which has an open view toward the bright living room and walks out to the spacious rear patio. The park-like private back yard is well bordered with trees plus there are spaces for gardens and perennials. Covered entry with extra space for protected outdoor storage for bikes or toys, wiring in place for ev charging, additional work shed included. A nice location as this home isn't on a heavily trafficked through street yet it's also just 1 block to the bus route. The community of Rosemont offers a nice environment for young families with Art Gibbon Park including the skate and bike park, all season walking trails, elementary school and cafe just a few blocks away. If you are looking for value in an easy care family home, this is the one to see! (id:6769)

David Gentles

RE/MAX Four Seasons (Nelson)

Phone: (250) 354-8225

<http://www.nelsonrealty.ca/>



RE/MAX Kelowna
100-1553 Harvey Avenue
Kelowna, BC,
Canada