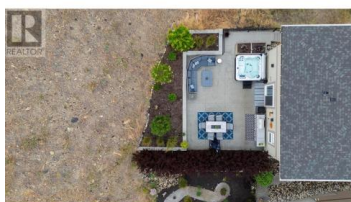




## 1524 Tower Ranch Drive Kelowna British Columbia

Rutland North

**\$779,000**



Welcome to Solstice at Tower Ranch Golf Course Community--where luxurious living meets exceptional design and natural beauty. This beautifully appointed home features an open-concept main floor with a spacious living room that opens onto a large deck, perfect for relaxing or entertaining. The adjoining dining area complements a gourmet kitchen complete with a premium Bosch appliance package and a generous island with seating for four. Step outside to a stunning backyard patio featuring an outdoor kitchen, hot tub, and ample seating--an entertainer's dream. The upper level offers three well-sized bedrooms and two full bathrooms, including a luxurious primary suite with its own private deck showcasing breathtaking views of the city and Okanagan Lake--perfect for unwinding with a sunset backdrop. Additional features include an oversized garage with 220V power for an EV charger and elevator-ready infrastructure for future accessibility. Residents of Solstice enjoy a low-maintenance lifestyle with snow removal, property management, and exclusive access to Tower Ranch Golf Club, a fitness center, media room, and on-site restaurant. Monthly fees: oLease: \$841.76 oStrata: \$60.35 oTower Ranch Community Association \$30.00 Experience elevated living in a vibrant golf course community--discover the Solstice lifestyle today. (id:6769)

**Lorne McBratney**

Coldwell Banker Executives Realty

Phone: (250) 826-1087

<https://lornemcbratney.agent.cbignite.ca/>



**RE/MAX Kelowna**  
100-1553 Harvey Avenue  
Kelowna, BC,  
Canada

