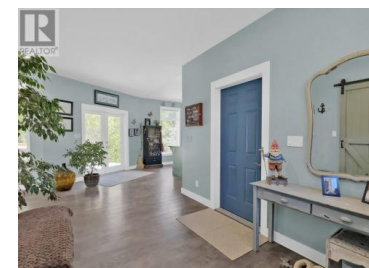
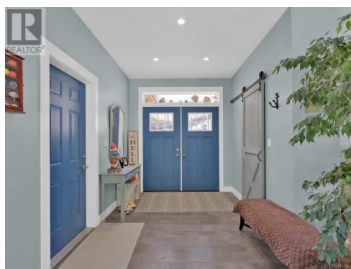




153 Smythe Drive Penticton British Columbia

Wiltse/Valleyview

\$1,400,000



Welcome to 153 Smythe Drive -- a truly one-of-a-kind property tucked away in a magical, ultra-private setting. This hidden 1-acre gem offers stunning views of Skaha Lake, vineyard-covered hillsides, treetops, and surrounding mountains. Only a handful of homes enjoy this privileged location, perched above a quiet, charming road that leads to world-class climbing and hiking -- all within Penticton city limits and without a steep drive into the hills. Thoughtfully built in 2015, the 1,700 sq ft rancher pairs with a 400 sq ft over-height garage featuring a loft and extra storage, ideal for a variety of hobbies and projects. A spacious foyer opens into the great room, where a striking two-tone kitchen with a sit-up bar and custom natural gas fireplace are focal points. Expansive wraparound windows give the feeling of being nestled in the treetops, blending indoor comfort with the beauty of nature. Step directly into your private outdoor living space, where a secluded infinity-style pool is perfectly positioned to frame the natural views. The primary bedroom includes a 3-piece ensuite, large walk-in, and private access to the pool and deck. An additional bedroom, generous dining area, and custom laundry room complete the one-level living. The property is fully fenced, professionally landscaped, and designed for ease of living. Ample parking includes a dedicated RV site plus space ...

John Green

Chamberlain Property Group

Phone: (250) 486-5353

<http://www.teamgreen.ca/>



RE/MAX Kelowna
100-1553 Harvey Avenue
Kelowna, BC,
Canada

