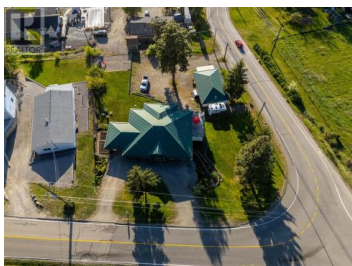




15326 Oyama Road Lake Country British Columbia

Lake Country East / Oyama

\$1,450,000



From the moment you arrive, you will be captivated by this charming property, just steps from Wood & Kalamalka Lake. Set on a 0.618 corner acre lot, the home offers expansive views and elegant curb appeal. The thoughtfully designed wrap-around driveway welcomes you with a covered front porch and carport. A second driveway services the detached workshop and multiple garages, with ample parking for vehicles, a boat or an RV. Inside the residence built by Harmony Homes, you will find an expansive main floor featuring hardwood floors, as well as wide and accessible hallways and doorways. Enjoy the west facing deck off your main floor primary bedroom, wrapped beautifully around the kitchen for more entertaining space. Every detail has been considered for functionality and convenience, including a secondary entrance to turn this walk out basement into a one bedroom suite. The garage enters into the unfinished, spacious mechanical room and can easily be locked off for your own storage. Fenced in, irrigated yard offering a sanctuary of greenery and vibrant life. Mature ponderosa pines, fruit trees and grapevines create a stunning ambience, while a greenhouse and raised garden beds add to the property's charm for gardening enthusiasts. The 80-amp heated workshop, includes wide-plank wood flooring, barn doors, an I-Beam and hot water on demand for the half bathroom. In proximity to bo...



RE/MAX Kelowna
100-1553 Harvey Avenue
Kelowna, BC,
Canada

Scott Marshall

Sotheby's International Realty Canada

Phone: (250) 470-2388

<http://www.scottmarshallhomes.com/>

