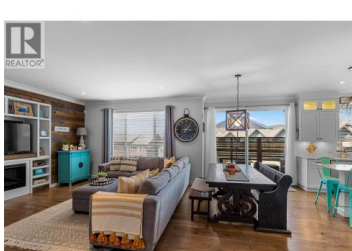
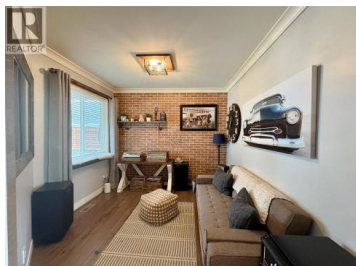




1559 EMERALD Drive Kamloops British Columbia

Juniper Ridge

\$1,065,000



This executive two-storey home in Juniper West showcases a sleek, modern design with high-end finishes throughout with a 1 bedroom basement suite as a mortgage helper. Thoughtfully upgraded, the open-concept layout includes striking feature walls and offers 4 bedrooms on the upper level, along with a fully finished basement that includes a separate 1-bedroom in-law suite. A total of 3.5 bathrooms provide ample space for the whole family. Step outside to enjoy a welcoming cedar front patio and a generous 8x21 deck off the dining area--perfect for enjoying morning coffee or soaking up the afternoon sun. The bright Excel kitchen is beautifully appointed with under-cabinet lighting, wood cabinetry, quartz countertops, a central island with bar seating, and a premium appliance package. The living room features custom-built entertainment storage, while wide plank hardwood flooring, 9-foot ceilings, and vaulted accents in the spacious upstairs bedrooms add to the home's refined feel. Juniper West offers quick access to scenic hiking and biking trails--including the renowned Kamloops Bike Ranch--as well as parks with playgrounds, tennis courts, a seasonal basketball/ice rink, and dog parks, offering something for every outdoor enthusiast. (id:6769)

Kyle Panasuk

Royal LePage Westwin Realty

Phone: (250) 374-1461



RE/MAX Kelowna
100-1553 Harvey Avenue
Kelowna, BC,
Canada

