

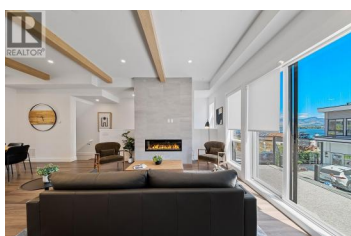
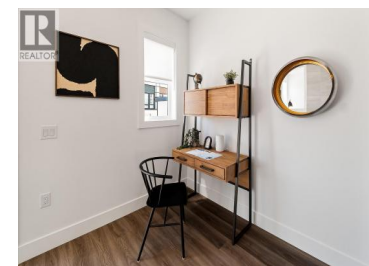
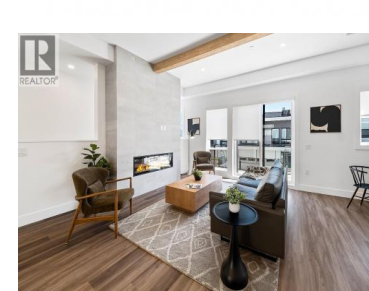
2100 CAMPBELL Road 157 West Kelowna British Columbia

Lakeview Heights

\$1,244,900



This Shelter Bay townhome is our B floorplan in our Sail colour scheme and comes with a wonderful 1,920 square feet of living space featuring, 3 bedrooms and 2.5 bathrooms, a large 406 sq foot roof top terrace and a spectacular view of Okanagan Lake. This home comes with side-by-side double car garage, open concept living plan, luxuriously finished with exposed wood beams, high-end appliances and fixtures. Amenity center with swimming pool, hot tub, games room, theatre room, golf simulators and meeting areas are all within steps of this home. This home is currently set up as a STR and we could look at selling it turn-key ready. You'll love it here! (id:6769)



Ceinwen Morgan

Oakwyn Realty Okanagan

Phone: (250) 215-9221



RE/MAX Kelowna
100-1553 Harvey Avenue
Kelowna, BC,
Canada