



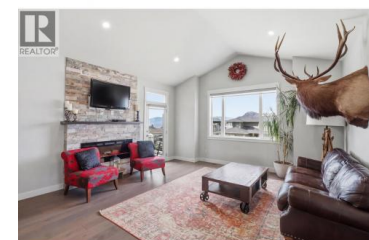
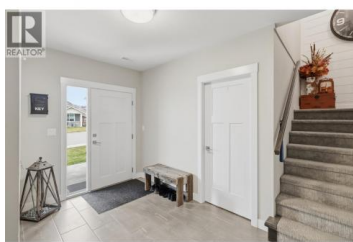
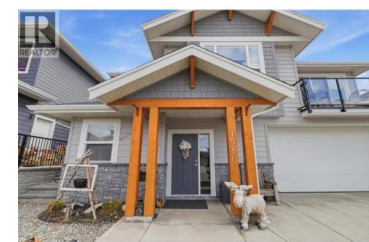
## 1580 EMERALD Drive Kamloops British Columbia

Juniper Ridge

# \$975,000



Where Modern Living Meets the Lifestyle You've Been Dreaming Of!! Wake up to peaceful mornings in the heart of Juniper Ridge, one of Kamloops' most sought-after communities--where nature, comfort, and modern living come together effortlessly. This beautifully designed home invites you - you will find a bright large entrance. Upstairs is the open-concept layout that feels both elevated and welcoming. The main living space flows seamlessly, creating the perfect backdrop for everything from cozy nights in to hosting friends and family. Step out from your dining room onto the covered deck and into your fully fenced backyard--ideal for summer BBQs, morning coffee, or watching the kids and pets play freely. Upstairs, you'll also find three spacious bedrooms, including a primary retreat with a gorgeous ensuite--your own private space to unwind and recharge. An additional room/den downstairs offers flexibility for guests, a home office, or growing families. Downstairs also features a self-contained two-bedroom suite with its own entrance and laundry--perfect for accommodating extended family. The home also offers a double garage and ample driveway parking, blending convenience with everyday practicality. And the lifestyle? It's unmatched. Spend your weekends exploring nearby hiking trails, biking at the Juniper Bike Ranch, or enjoying the close proximity to parks, schools, and local...



**RE/MAX Kelowna**  
 100-1553 Harvey Avenue  
 Kelowna, BC,  
 Canada

**Carmeliza Hurst**

eXp Realty (Kamloops)

Phone: (250) 574-4074

