



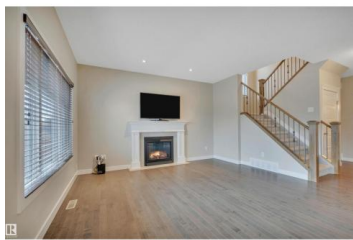
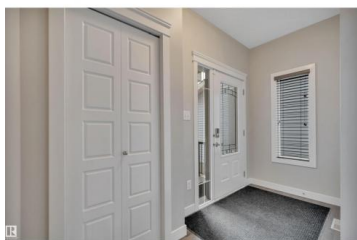
Edmonton Alberta

Glenridding Heights

\$629,900



Welcome home to Glenridding, where this former Pacesetter SHOW HOME blends style, space, and an unbeatable location. Backing onto a scenic WALKING TRAIL and just minutes to Anthony Henday and Currents of Windermere, schools and parks, this 2286 sq ft home checks all the boxes. The open-concept main floor features gleaming hardwood floors, a bright living room with gas fireplace, and a versatile DEN, perfect for working from home. The gorgeous kitchen offers ample cabinetry, beautiful granite counters and a corner pantry for effortless everyday living. Upstairs you'll find 4 BEDROOMS, a large bonus room, full bath, and a stunning primary retreat with walk-in closet and luxurious 5-piece Ensuite. The basement is ready for your personal touch. Enjoy a fully landscaped, south-facing backyard and double attached garage. This one truly has it all. (id:6769)



Victoria Rempel

RE/MAX Elite

Phone: (780) 266-0071

<https://www.victoriarempel.ca/>



RE/MAX Kelowna
100-1553 Harvey Avenue
Kelowna, BC,
Canada