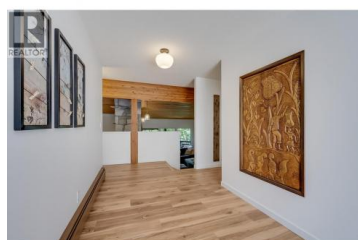




1590 Willow Crescent Kelowna British Columbia

Glenmore

\$1,415,000



Step into this magnificent home, nestled in one of Kelowna's most desirable neighbourhoods. This expansive 5-bedroom, 4-bathroom home spans over 5,240 sq. ft. across four thoughtfully designed levels and sits on a generous 0.27-acre lot offering privacy. This great location has walkability to everything being just minutes from the rail trail, with access to downtown, parks, and schools. The expansive main level has vaulted wood ceilings that span the kitchen, dining, and living areas, while a stunning multi-floor rock fireplace adds warmth and character. The stunning kitchen features new custom cabinets, island, gas range, spacious pantry and built in coffee bar. The main living areas flow beautifully to the massive, covered deck. The generous, oversized bedrooms offer a retreat within a retreat. A summer kitchen on the middle level adds functionality for multi-generational living, complemented by a hidden room perfect for a wine cellar and a workshop under the garage with an office and separate entrance. The lower levels also include three bedrooms, a rec room, and flexible living spaces. Central air (top floors), radiant heating with boiler (hydronic heat), oversized double garage, fenced yard with a bountiful garden and a patio area. (id:6769)

Scott Mayne

RE/MAX Kelowna

Phone: (250) 469-4001

<http://www.pwrg.ca/>



RE/MAX Kelowna
100-1553 Harvey Avenue
Kelowna, BC,
Canada

